



GUIDE PRICE

£450,000

Mill Street

Westerham, TN16 1TH

PROPERTY SUMMARY

GUIDE PRICE £450,000 - £475,000

EPC:

Freehold

COUNCIL TAX - D

Construction - Traditional brick

Mains Services - Yes

Heating System - Gas radiators

Broadband – Trooli

Mobile coverage - Good

Restrictive covenants – No

2



1

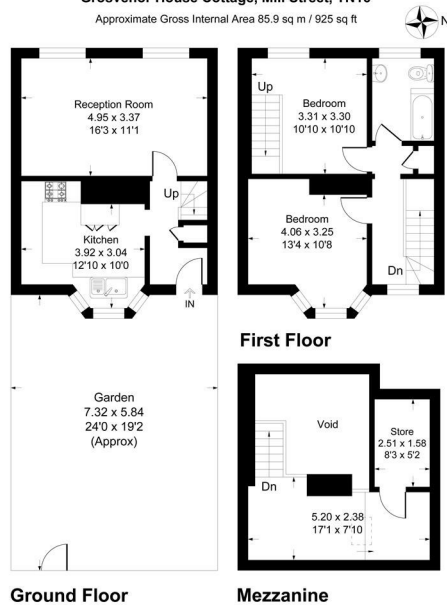


1

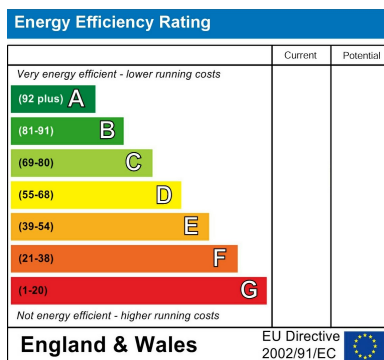
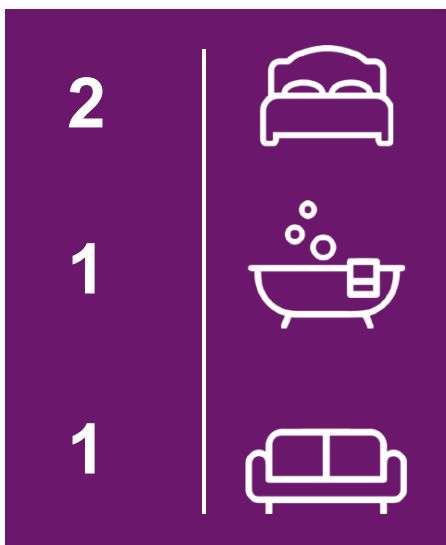


Grosvenor House Cottage, Mill Street, TN16

Approximate Gross Internal Area 85.9 sq m / 925 sq ft



This plan is for layout guidance only. Not drawn to scale unless stated. Windows and door openings are approximate. Whilst every care is taken in the preparation of this plan, please check all dimensions, shapes and compass bearings before making any decisions reliant upon them. Produced By Planika



EPC RATING: COUNCIL TAX BAND: D

Agents Note: Whilst every care has been taken to prepare these particulars, they are for guidance purposes only. All measurements are approximate and are for general guidance purposes only and whilst every care has been taken to ensure their accuracy, they should not be relied upon and potential buyers/tenants are advised to recheck the measurements

Sinclair Hammelton

OFFICE ADDRESS
1&2 The Grange
Westerham
Kent
TN16 7AH

OFFICE DETAILS
01959 587 460
infowh@sinclairhammelton